



# Titan Electric

## STRATFORD SQUARE MALL



Titan Electric completed a 160,000 square foot interior renovation at the Stratford Square Mall in Bloomingdale, IL, including an upgrade of the entire lighting system throughout the mall.

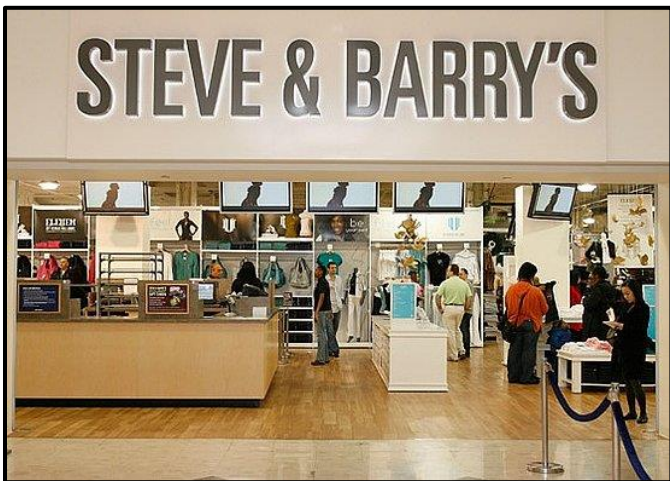
Reflecting the recent trend toward open-air shopping centers, the project introduced a number of enhancements including a garden theme throughout the mall featuring ivy-laced trellises at the mall entrances and food court; an automated scene with 20-foot-high flowers, flying birds and racing ladybugs to entertain children; and a new café court with patio furniture, lush landscaping and a fountain 30 feet in diameter.



A number of individual retail stores were completely renovated as part of the project including Steve & Barry's, a retail clothing chain, and the new Century Movie Theater. Steve & Barry's was finished in a very aggressive 10-week schedule, and the Century Theater was raised by 40 feet to allow for stage seating in the 18 new theaters.

Titan Electric's involvement included:

- Complete lighting system
- All new lighting controls
- Wiring for the water fountain
- Install, program and certify building fire alarm system
- Emergency lighting system
- Upgraded mall paging system



Graycor was the general contractor for the project with architectural services provided by Anthony Belluschi/OWP&P Architects.

*POWERING THE FUTURE*