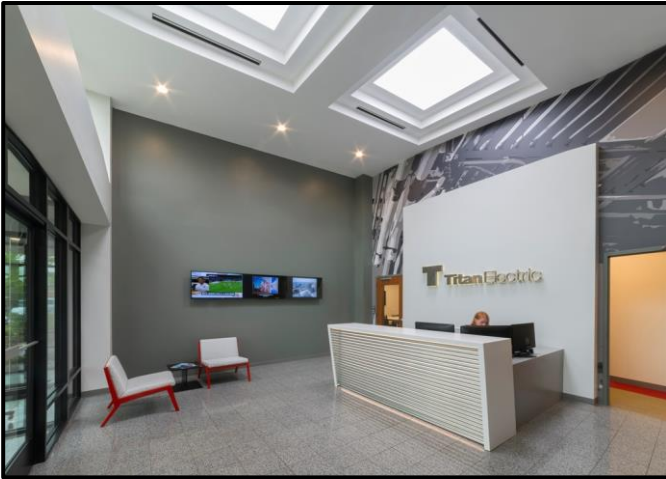




Titan Electric

TITAN ELECTRIC HEADQUARTERS



Titan Electric completed its new 23,000 square foot office/warehouse facility in Itasca, IL. The main building houses a custom reception desk, complete with a conduit front and back lit with LED lighting. To facilitate an open-space feeling, nine foot tall glass fronts with sliding doors were installed in all offices. Utilizing an eighteen foot floor to roof deck height, an open ceiling exposing HVAC as well as conduit and electrical work was incorporated in the design. Conduit pipes were color coordinated in Titan's company colors of red and yellow to stand out against an all-white ceiling, identifying lighting, power, security and fire alarm. The Main Equipment Room (MER) was enclosed in floor to ceiling glass making it a showroom, complete with a small conference room on one side looking in.



Titan's involvement included installation of:

- 350 kw diesel backup generator
- Service entry transfer switch
- Cat6 VOIP structured cabling with fiber and copper backbone to the Building NETPOP
- Network based Lenel Security System, IP Camera System, sound-masking and overhead paging system
- Open air cable tray system
- Custom white server cabinets, 19" relay rack, cable management and white ladder racking overhead
- Digital signage
- Table wiring and wireless AV connectivity to 60" LED display, 90" LED display and dual 80" LED displays
- Crestron Digital Media Audio Visual System controlled from multiple I-Pads



Leopardo Construction and FCL Builders were the general contractors for the project with architectural services provided by Whitney Architects and Cornerstone Architects. Interior photos © Steinkamp Photography

POWERING THE FUTURE